

EML224 / DL1 Compact Speed Log System

Reset of Trip Counter & Total Trip Counter

This document is to be used as a guideline to reset the system Trip Counter & Total Trip Counter in cases where EML224/DL1 Compact Speed Log System Total Trip counter has passed 99 999.9

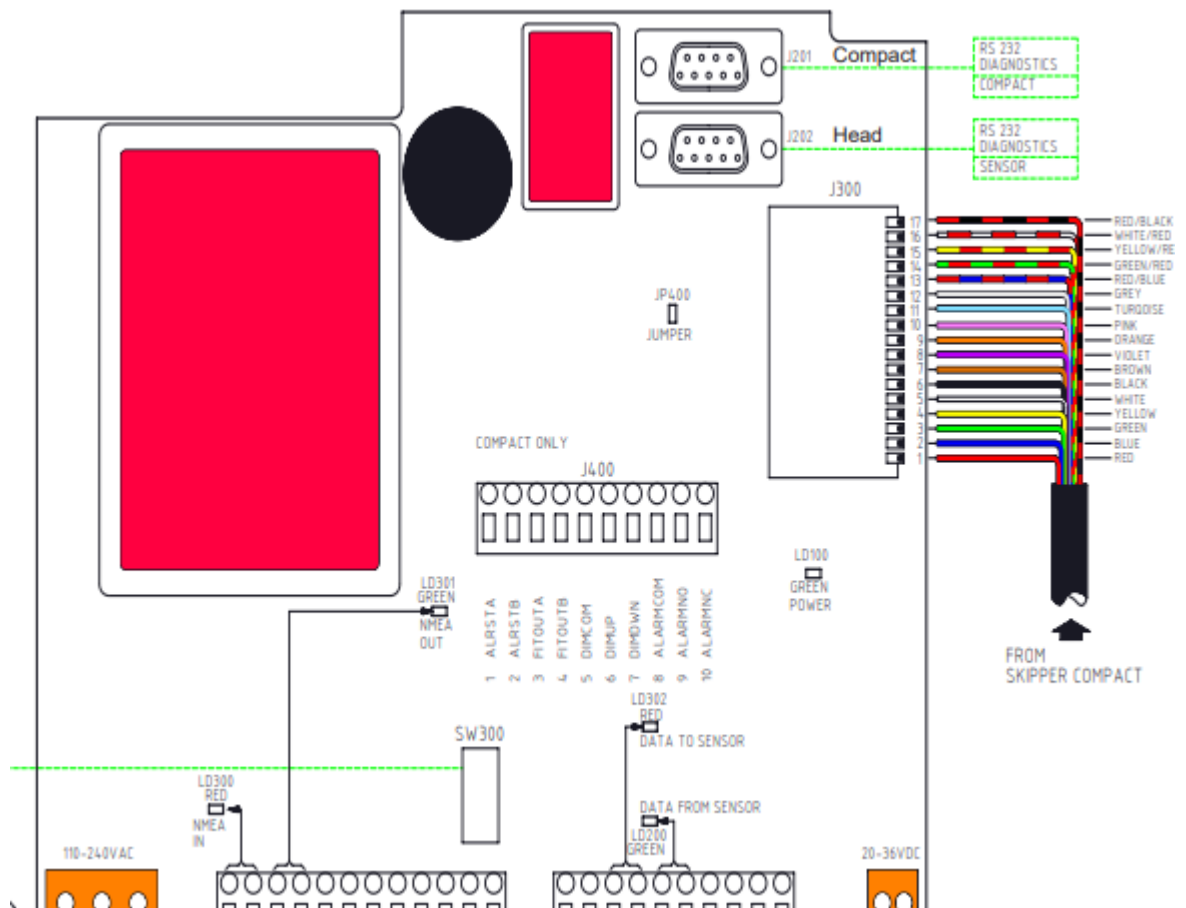
When this happen repeaters e.g. IR300 will show -.-.-.-.- in their display, reason is limitation of digits in the repeaters and not a limitation to the EML224 / DL1 system itself.

The work around is to carry out a Reset of the Trip counters. To do so you will need latest [Skipper Service Software](#) (LINK) which is located on our WEB page under Software.

This procedure requires a USB to RS-232 adapter, if you already have a Skipper ETT985 Echo Sounder and Transducer Tester (Skipper p/n ETT985-SASW) you can use the adapter following this tester (Skipper p/n ZZH-01032). You will need access to the Electronic Unit JB60 CD.

Procedure:

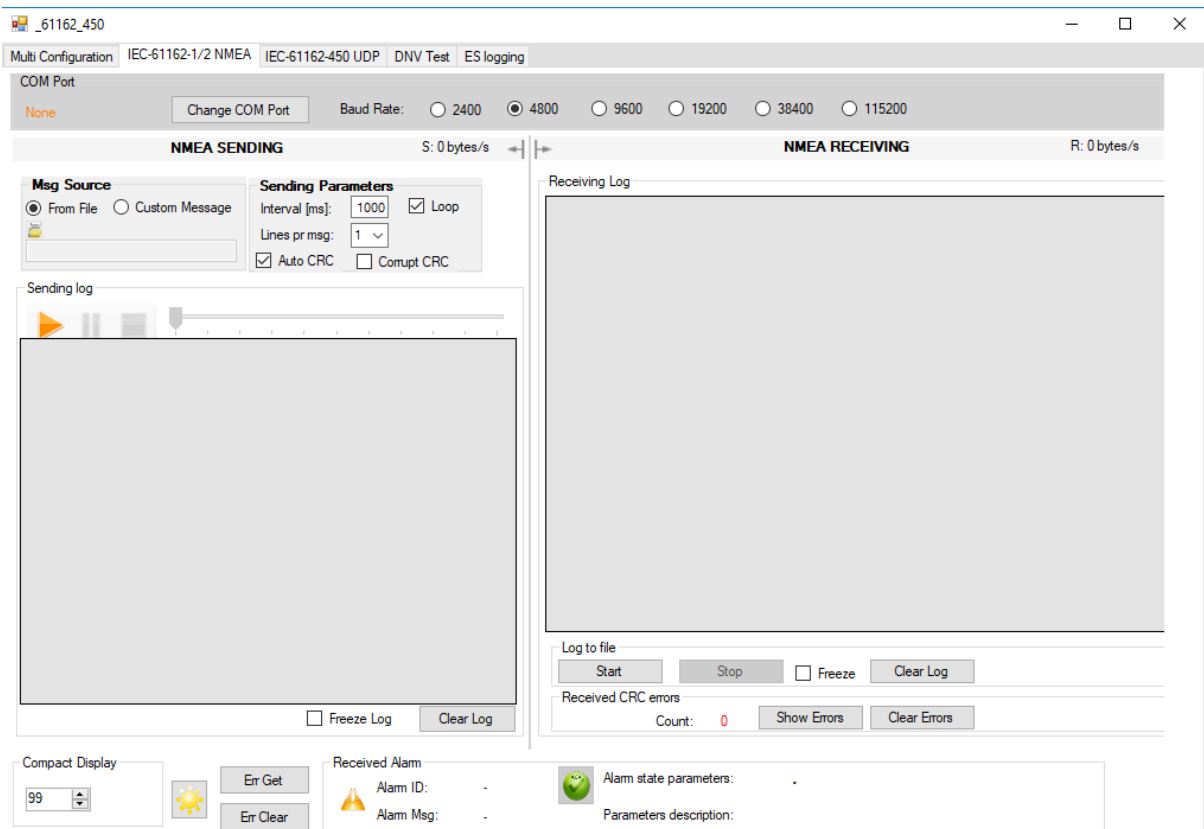
- 1) Locate the Electronic Unit JB60 DB and connect your USB > RS-232 adapter to the 9-pin D-Sub female connector J201 "Compact".



2) Start the Skipper Service Software and select **Com Setup**.




3) Select the **IEC-61162-1/2 NMEA** Tab

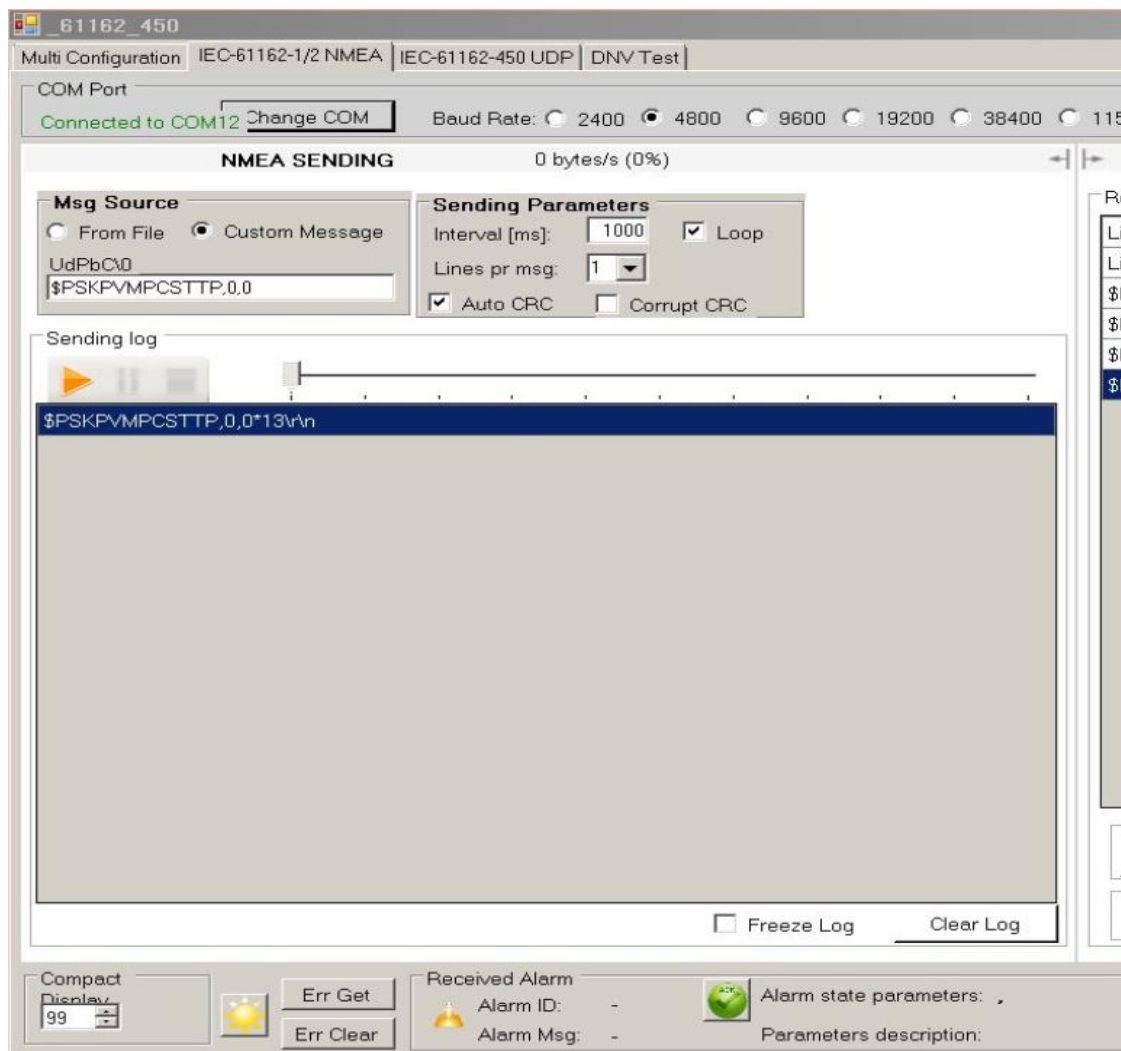


- 4) Use Change COM Port to select the correct COM port to where your USB > RS-232 adapter is connected, make sure **Baud Rate** is set to 4800. **Change Msg Source** "From File" to "Custom Message".
- 5) Copy and paste below line into the **UdPbC\0** window.

NMEA SENDING S: 0 bytes/s

<p>Msg Source</p> <p><input type="radio"/> From File <input checked="" type="radio"/> Custom Message</p> <p>UdPbC\0</p> <p>\$PSKPVMPSTTP,0,0</p>	<p>Sending Parameters</p> <p>Interval [ms]: <input type="text" value="1000"/> <input checked="" type="checkbox"/> Loop</p> <p>Lines pr msg: <input type="text" value="1"/></p> <p><input checked="" type="checkbox"/> Auto CRC <input type="checkbox"/> Corrupt CRC</p>
---	--

- 6) NMEA string to reset counters: \$PSKPVMPSTTP,0,0
- 7) Next press the **PLAY**  button to send the NMEA sentence.



The screenshot shows the 'NMEA SENDING' window of a software application. At the top, it displays 'Multi Configuration' with tabs for 'IEC-61162-1/2 NMEA', 'IEC-61162-450 UDP', and 'DNV Test'. The 'COM Port' is set to 'Connected to COM12' with a 'Change COM' button. The 'Baud Rate' is set to 4800. The 'Msg Source' is set to 'Custom Message' with the text '\$PSKPVMPSTTP,0,0' entered in the 'UdPbC\0' field. The 'Sending Parameters' are set to 'Interval [ms]: 1000', 'Lines pr msg: 1', and 'Auto CRC' is checked. Below these settings is a 'Sending log' window with a play button and a progress bar. The log shows the message '\$PSKPVMPSTTP,0,0*13\r\n' being sent. At the bottom, there are buttons for 'Compact Display', 'Err Get', 'Err Clear', and 'Received Alarm' status indicators.

- 8) This sentence will reset both Trip and Trip Total counters. Please note that you may have to send the sentence more than one time depending on traffic on the bus.

This completes the procedure on how to reset Trip and Total Trip counters.

Reference NMEA message - \$VMVLW,....,Trip and total

Please contact support@skipper.no in case you have questions or concerns.